

Apple iPad Take apart guide:

- First of all take the iPad Opening tool and slide it between the display screen of the iPad and the metal frame (aluminum frame) to pry up the screen on each side. This will release the tabs that hold the screen together. Beware that some of the clips (tabs) may break in the process, and you will need to replace them. You can greatly minimize the risk of damaging these clips during prying by using iPad Opening Tool which is specifically designed for this purpose. When prying off the screen you need to be careful not to pry near the the Volume button, head phone port and Home button as you could damage these parts.

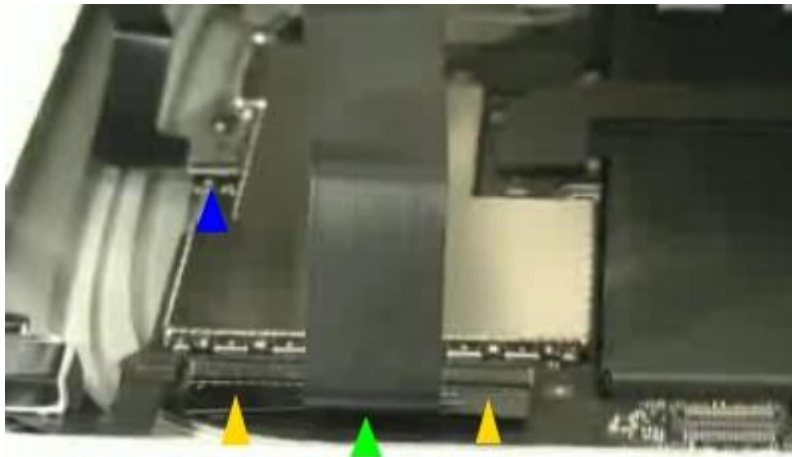


Figure 1

- As you open the case you will need to release one of the ribbon cables that is connected to the board indicated by the green arrow-head in figure 1. Using a safe open pry tool you must flip up both locks (shown by the orange arrow-heads in figure 1) that hold the ribbon in place before you are able to slide the ribbon out.
- You will then have to unplug the connector from the motherboard shown by the blue arrow-heads in figure1. It will be very easy to pull it up and off the motherboard. It is just like a plug and will pop right off.

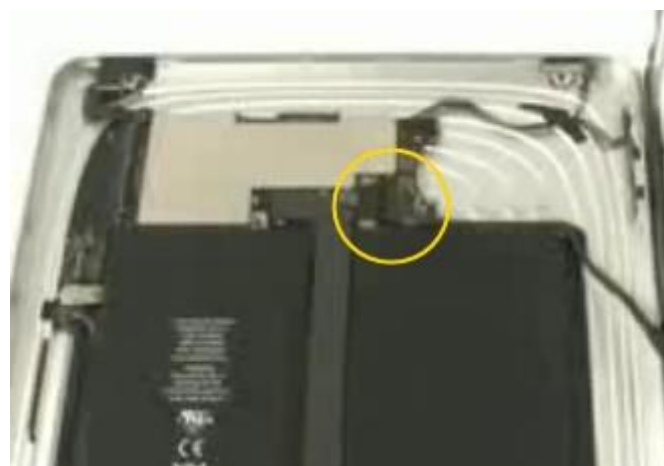


Figure 2

- While lifting the screen up from the back case there will still be another connector that is attached and will need to be removed. This final connector has a small hinge that

you must pull up and then it stays with the ribbon when you pull the connector out. The location of this connector is shown in figure 2.

- To remove the LCD you will need to lift up the ribbon cable that is held on with a piece of tape. This ribbon cable will come out with the LCD.



Figure 3

- You will now have to remove 8 screws (T4) that are holding the LCD to the touch panel frame. The locations of these screws are mentioned in Figure 3. For the removal of these screws you will require a T4 Torx Screwdriver.
- When you have removed the screws and before you separate the LCD from the touch panel assembly there is a piece of tape that needs to be lifted up slightly in order to remove the LCD from the touch panel assembly. This tape can be located on the side that did not have any screws (refer to figure 3).
- You are now able to gently pry up the LCD from the touch panel assembly. Using a small flathead screwdriver at each of the screw locations can help pry it up sometimes. You need to be careful in prying the LCD up as it is adhered around the edges.

Your Apple iPad is now disassembled and ready for replacement of part(s). Reverse the instructions above to reassemble your iPad.